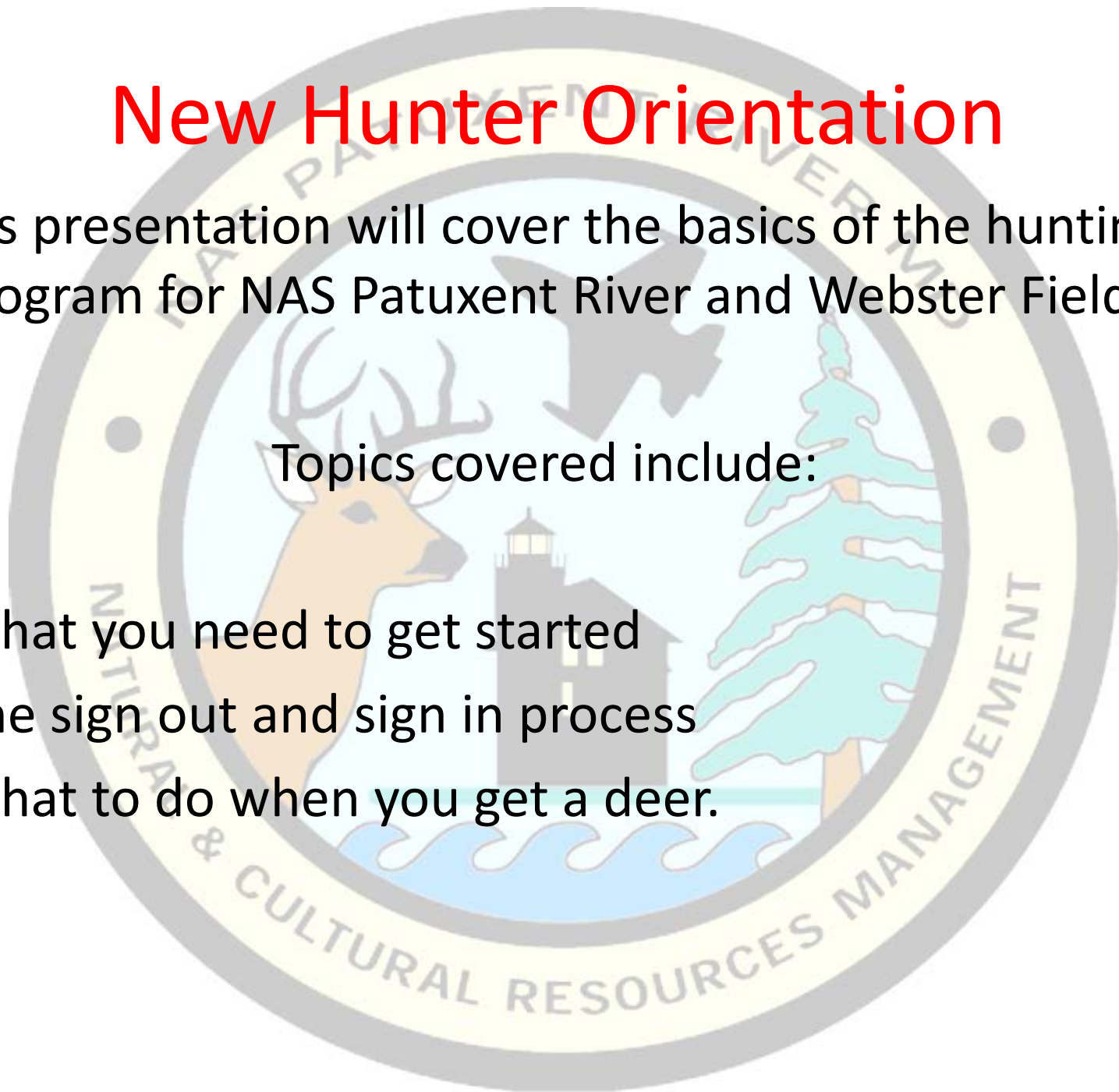


# New Hunter Orientation

This presentation will cover the basics of the hunting program for NAS Patuxent River and Webster Field.

Topics covered include:

- What you need to get started
- The sign out and sign in process
- What to do when you get a deer.



# To get started hunting, you need:

1. Maryland DNR hunting license with all required stamps (i.e. – Bow, Muzzleloader, Waterfowl, etc.)
2. Installation hunting permit for Pax or Webster
3. Register your weapon(s), go to gate 2 pass and ID Office. (You will need make, model, and serial #s)
4. **READ ALL APPLICABLE STATE AND INSTALLATION HUNTING REGULATIONS!!!!**

# Now you can hunt...

- Hunters must check-in/out to hunt or scout. Do so by clicking on "CHECKIN" in the blue banner at the top of the Isportsman website. Hunters may also check-in/out via a telephone by calling (844) 500-1164
- Go ONLY to the area you signed out to, an only ONE area at a time. To go to another area, you MUST sign "in" from 1<sup>st</sup> area and sign "out" to the 2<sup>nd</sup>. (EXCEPTION: A person may sign out to "SCOUT" multiple areas at a time.)
- Take note of other hunters signed out to the area – There are quotas during firearm seasons. (note archery only areas and restrictions during various seasons detailed in regulations)
- HUNT
- You MUST sign "in" no later than an hour and a half after legal shooting time. You can sign "out" to "SCOUTING" to track a deer if more time is needed.

# I GOT A DEER... NOW WHAT?

- Take the deer to the Hunter Check Station
  - Sign “in”
- \*\*\* Call a check station volunteer from the list on the board. \*\*\*
  - WAIT for the volunteer to arrive
  - Provide your State license and Installation hunting permits to the volunteer.
- Tell volunteer: Area taken from, time shot, and weapon used.
  - Field dress the deer.
  - (Turkey must be checked in too)

# Check in process continued...

The Volunteer will need, and can help with collecting:

1. A small piece of the heart muscle
2. A small piece of skeletal muscle
3. The jaw for age (unless you plan to have mounted)
4. The ovaries from any doe taken
5. Measurements of the antlers of any bucks taken

The volunteer will:

1. Stamp your State harvest record and complete.
2. Provide garbage bags for innards
3. Provide gloves if wanted
4. Provide some assistance with field dressing if needed.

# YOU THEN NEED TO:

- Call Maryland DNR to get confirmation # for harvest record
- Place tag(s) on deer according to the regulations
- Make sure the volunteer has all the information needed
- Make sure you signed “in” before you leave

**IF YOU HAVE ANY QUESTIONS...**

Please contact NAS Patuxent River  
Natural Resources Department at  
**(301) 342-3670**

And review the website regularly  
for updates

<http://naspaxriver.isportsman.net>

**GOOD LUCK!!!!**